


1



GRAND | HYATT™

EMERGENCY EVACUATION PLAN FOR

Level 3 Event Space

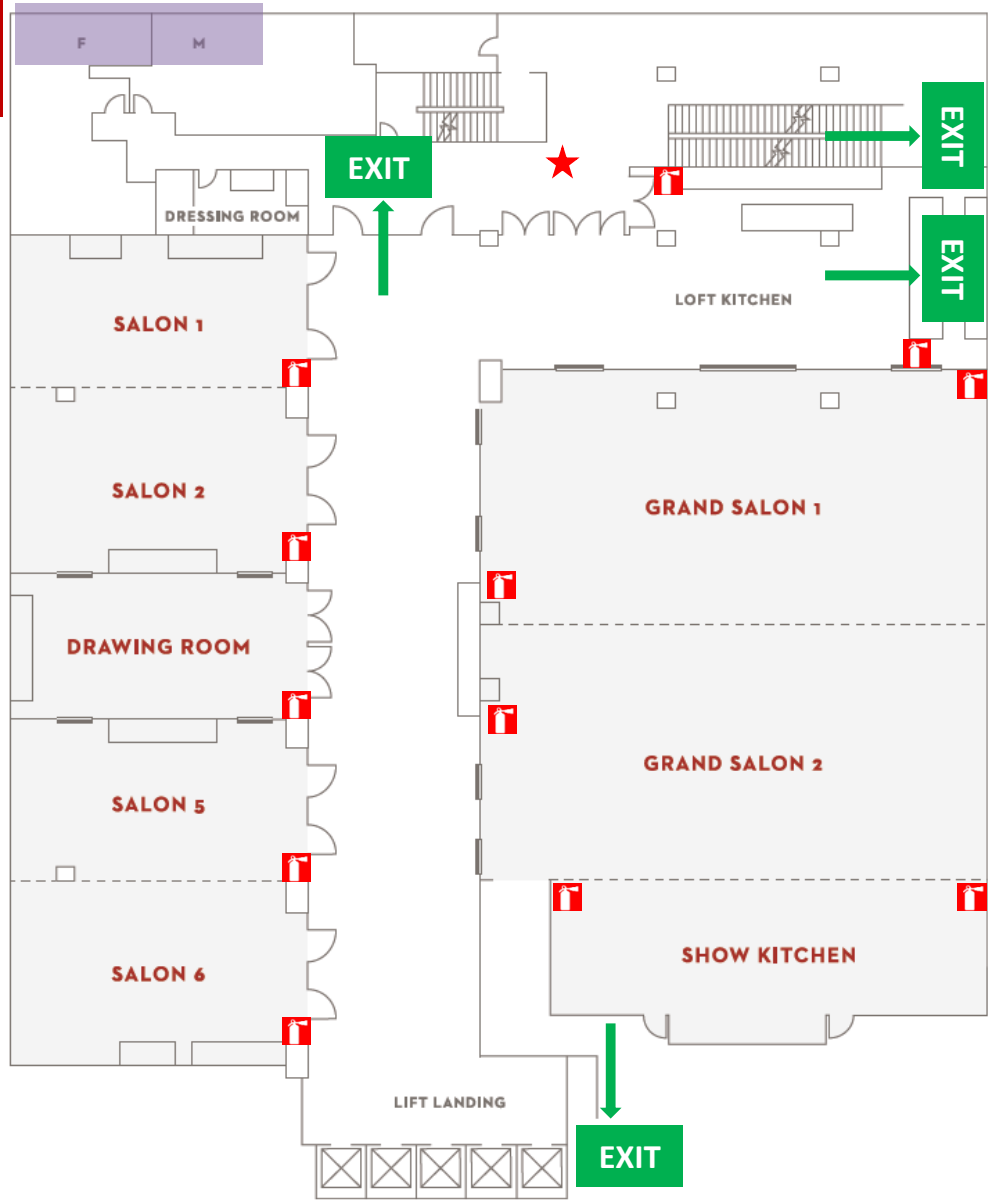
To provide a safe and secured environment for all hotel guests, visitors and employees

- If you hear an alarm , stay calm while hotel investigate the cause.
- Standby for further instruction.
- **DO NOT EVACUATE.**
- After investigation, if it is a false alarm, an announcement will be broadcasted.

- However, when you hear a second alarm  please leave in a calm and orderly manner to the nearest exits 
- Listen carefully to public announcement
- Obey all instructions from Fire Wardens.
- Use the staircases, escalator and walk down to lobby.
- Do not take the lifts.

FLOOR PLAN- LEVEL 2

Assembly Area
Level 3B Car Park



LEGEND:

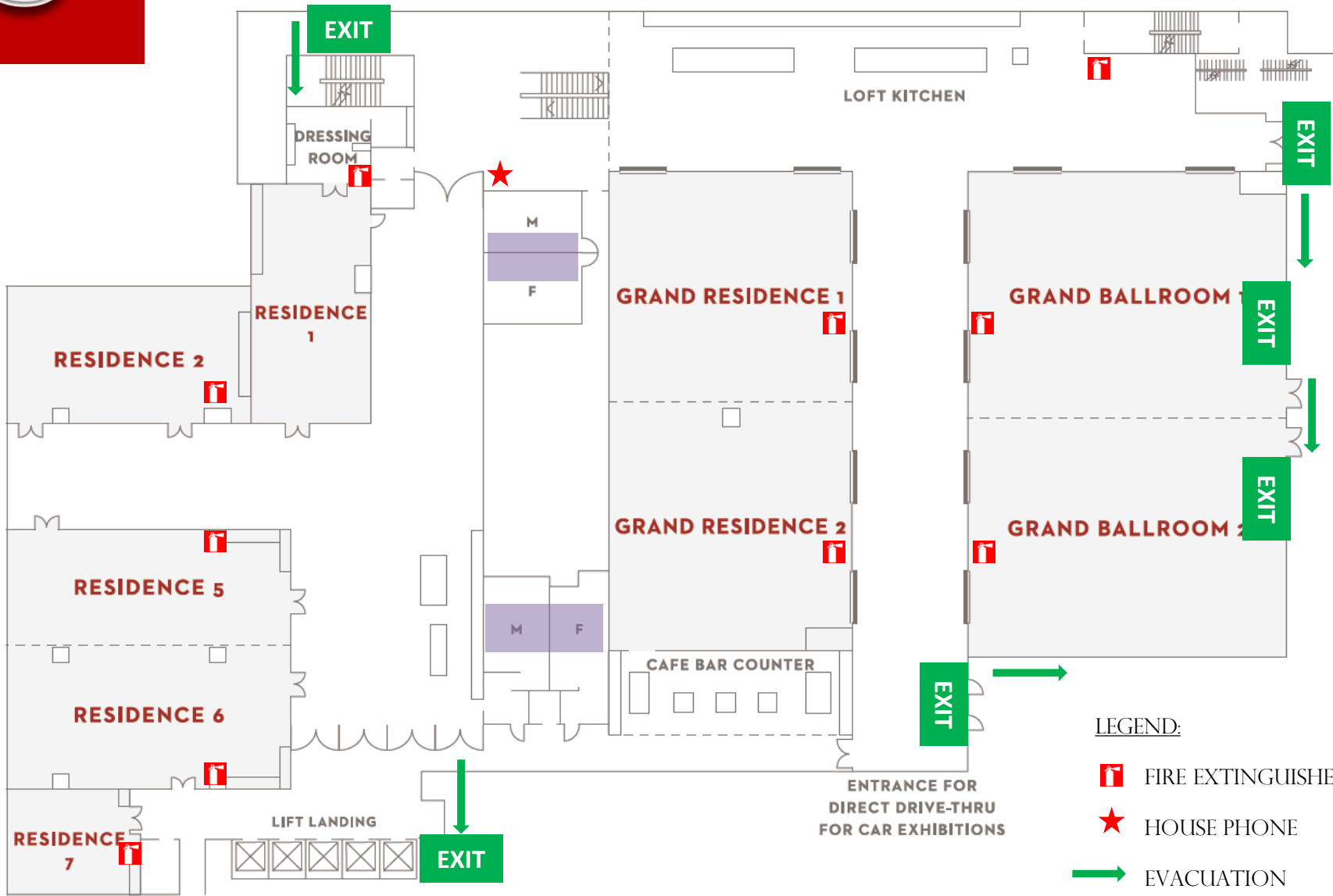
 FIRE EXTINGUISHER

 HOUSE PHONE

 EVACUATION

FLOOR PLAN – LEVEL 3

Assembly Area
Level 3B Car Park



- LEGEND:**
- FIRE EXTINGUISHER
 - HOUSE PHONE
 - EVACUATION

6

Assembly Area (AA)

